



PYTHON
P R E D I C T I O N S
A TOBANIA COMPANY

**BI Tool Assessment
& Advising.**



**Get it right
from the start.**

anticipate verb [T] - **to take action
in preparation for something
that you think will happen.**



Why BI Tool Assessment & Advising?

Even though BI software is increasingly customisable these days, it is still good to understand its capabilities and limitations. So, making the right decision on which tool to implement, will save your company money and increase both employee confidence and satisfaction. We therefore recommend taking the time to get it right the first time, considering both short-term and long-term requirements.



Our 3-step approach

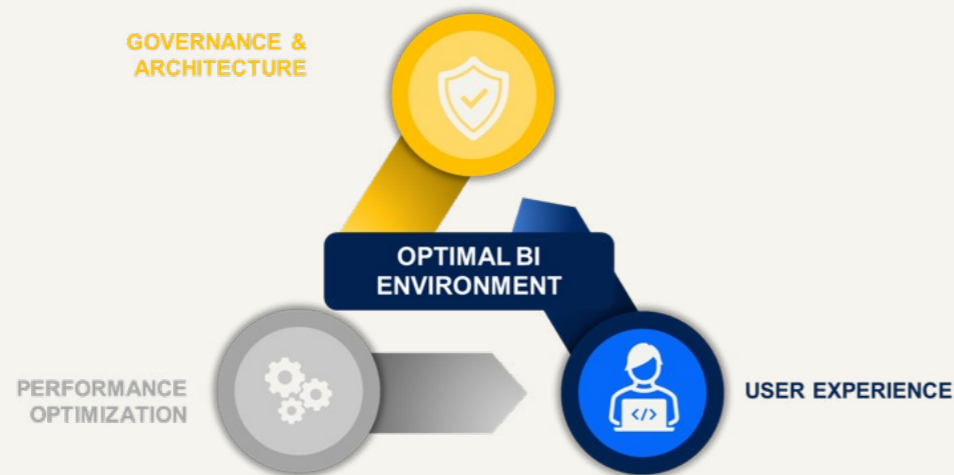
We help you with our consulting services to become data-driven with BI in two ways. On the one hand, we are experts in optimising existing implementations for scale and complexity. Changes in your organisation's needs or structure may require a review of the architecture. On the other hand, we have extensive knowledge of the strengths and limitations of BI tools. This puts us in an ideal position to evaluate the right fit for your business.

Selecting a new tool

Our approach to selecting a new Business Intelligence (BI) tool is a multi-step process consisting of (1) gathering functional and technical requirements through workshops, (2) defining an architecture based on scale, complexity and the business, (3) and finally selecting the tool. Our advice is independent, as we are not tied to any vendor.

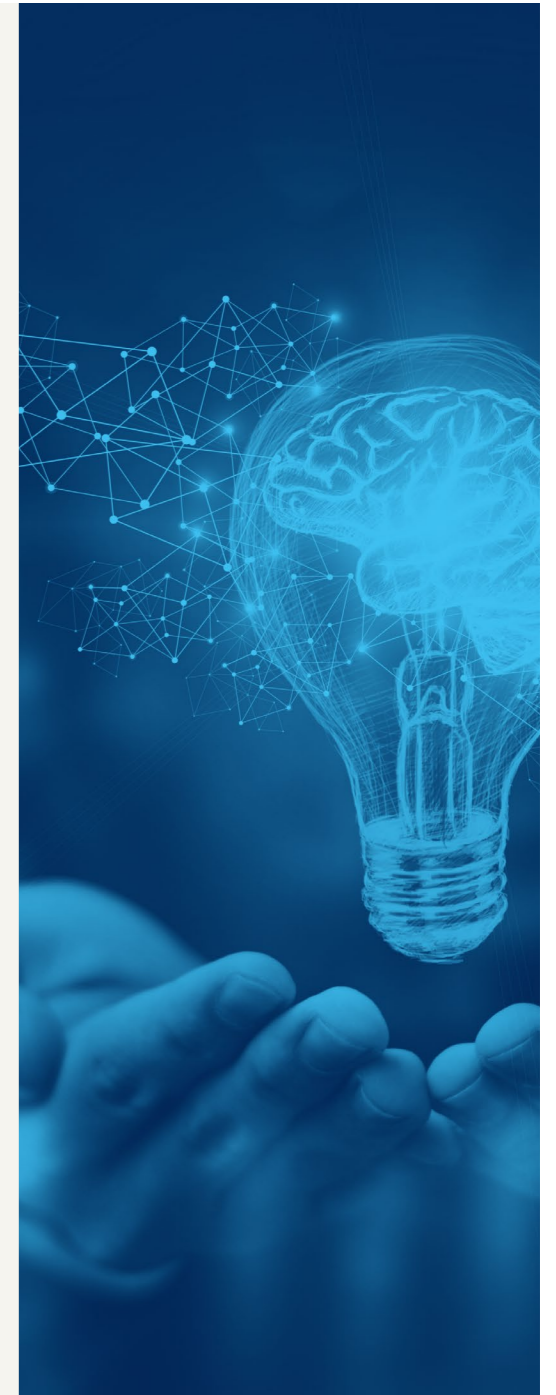
Improving an existing tool

Our approach to improving existing BI implementations consists of three main elements. First, we provide advice on optimising the performance of reports and data models to create a scalable and future-proof BI environment. Second, we help define a robust data governance framework and architecture. This includes establishing a set of rules for control, visibility and compliance, ensuring that your organisation's data is used effectively. Finally, we provide guidance on improving the user experience. For example; by building in collaboration tools, making insights more actionable.



BI Tool Assessment & Advising, who's it for?

Experience shows that organisations should regularly take the time to evaluate their analytics environment. By reviewing the analytics environment, it is possible to anticipate any required upgrades. Accordingly, a BI tool selection process is relevant to a **variety of businesses** and **use cases**.





Why we love BI Tool Assessment & Advising

Thanks to our BI Tool Assessment, you can:



Ensure a good fit:

A thorough software selection process helps you understand both the organisation's needs as well as the software's limitations. Ultimately, this will result in the best fit and avoid costly mistakes.



Guarantee scalability and future-proofness:

By reviewing the as-is state of the BI environment, your company can, on the one hand, reduce the cost of future investments and, on the other, ensure that the environment continues to perform adequately.



Increase efficiency:

By helping you through the process of software selection, less time will be spent searching and there will be no frustration over misinformed decisions. This will increase your employee satisfaction.



How we have helped others - The Unigro Case

As Unigro was experiencing tough competition in the online consumer market, the mail-order company enlisted Python Predictions to help them construct a coherent data-driven approach to increase its competitiveness. After an in-depth survey of internal stakeholders, we proposed to bundle Unigro's existing capabilities into a transversal data and analytics team. With our support, the team's first deliverable was the refinement of the data roadmap and the optimisation of the new virtual team's way of working. As such, this roadmap towards The Intelligent Data-Driven Organisation (TIDO) was delivered to achieve more efficient decision-making.

BI Tool Assessment & Advising, a solution to consider?

Would you like to know all about our solutions?

Just get in touch with us! We look forward to getting to know your business.

info@pythonpredictions.com

Avenue Roger Vandendriessche 9,

1150 Brussels (Belgium)

www.pythonpredictions.com



These happy customers like to work with Python Predictions as well.



Can't get enough of our Python Predictions crew?

We deliver great value to our customers, but you don't have to take our word for it.

Just like, follow and get to know us online.

